

Power Curber 5700-C

Optional Equipment

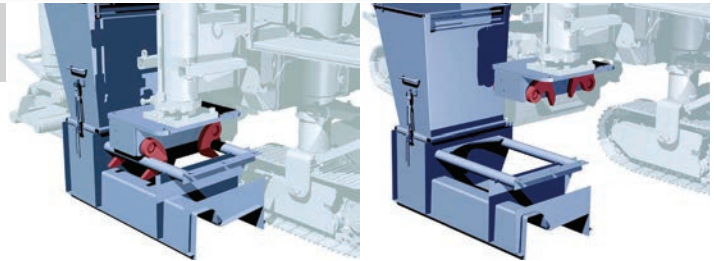
Power & **Power**
Curbers & **Pavers**



Universal Options

Quick Connect Mold Mount

Allows you to change molds in as little as five minutes. The hydraulically activated hooks release one mold and grab the next, with little manual work.



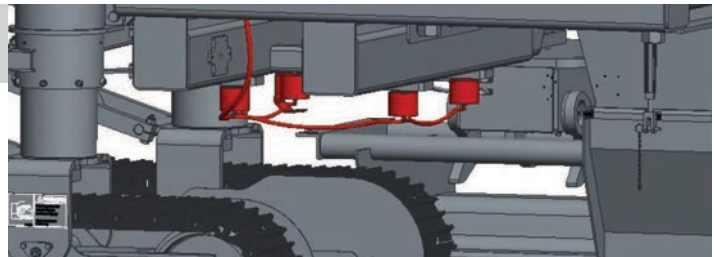
Hydraulic Front Grade Sensor Arm

Allows the front grade sensor to stay on line without manual adjustment. Very useful for turns and radius work. This option has two tiers, operator controlled, or fully automatic.



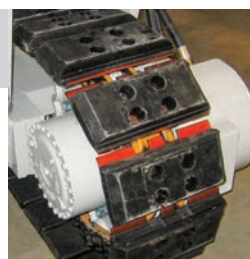
Hydraulic Mold Offset Lock

After using the standard hydraulic adjustable offset to position your mold, this feature enables you, at the flip of a switch, to lock the offset rigidly to the machine. (Mechanical lock standard)



Polyurethane Crawler Pads

Recommended when running the machine on finished surfaces. Poly pads completely replace standard steel grouser tracks, opposed to a clip-on or bolt-on style.



GPS/3-D Package (May be Purchased Individually)

Networked Digital Control System

Gives the benefits of an advanced graphic display and auto-slope control when transitioning from in-flow to out-flow. (Required for 3-D/GPS)



All-Crawler Steering

For large applications, coordinating the steering of all the crawlers can enhance the machine's performance. (Requires **networked digital control system**) (Required for 3-D/GPS)



GPS/3-D Controls Compatibility Kit

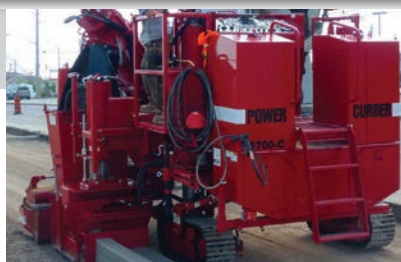
This kit is required to interface 3-D controls to the machine. It includes, power conditioner, wiring, and masts.



Universal Options (Continued)

Single Color Alternate Paint

Power Curbers gray is standard on all machines. You can match your fleet color or meet specific requirements for an area.



Engine Mounted Air Compressor

Enables use of air-operated hand-tools. Unavailable in CE-required countries.



Remote Hydraulic Controls

Four hydraulic control levers located within easy reach of the operator. These can be connected to a variety of features but are often used for mold side plates. Electric controls are also available.



D-Rings

Located on each side of all three crawlers, this option may simplify loading and unloading of the Power Curber for transport. These are alternate chaining points.



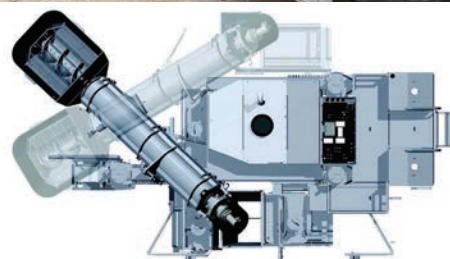
Fifth Sensor

The additional sensor allows the Power Curber to back up on stringline while leaving the tight radius steering sensor in place. (5th sensor comes standard with **all-crawler steering**)



Dual Side Pouring

The standard 5700-C setup is left side pouring. This option allows the machine to be reconfigured to pour on the right side.



Weight Pod

For large, offset applications, this option can help with stability. Recommended for molds over 60" (1.5m) wide. The pod weighs 1,980 lbs. (900 kg). (Incompatible with **auxiliary water tank**)



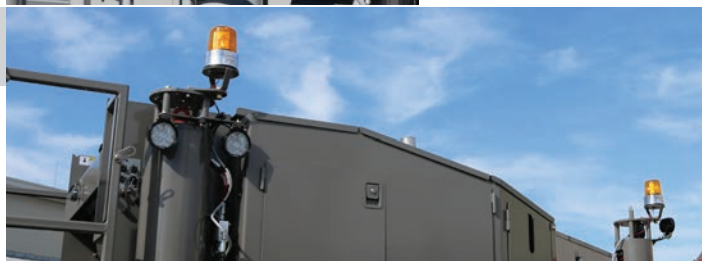
Additional Lights

Seven LED lights are standard. Additional lights can be included to assist with night time applications. Extra lights are priced by the pair.



Hazard Lights

These can be included for additional visibility when pouring near active traffic.



Trimmer Quick-Disconnects

For machines that will be frequently changing between applications, having quick-disconnects for the trimmer hydraulics can save a lot of labor.



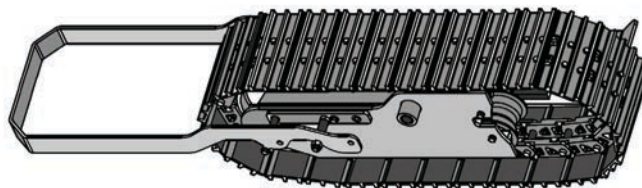
Crawler Cover

These can assist in keeping the crawlers clean.



Crawler Touch Bar

This feature can help determine clearances for the crawlers.



Water Options

Low-Pressure Water Pump

Having low-pressure water can be useful for filling buckets and other miscellaneous use around the machine. The low-pressure system is in addition to the standard high-pressure system.



Charge Hopper Water Kit

This kit allows for addition of water to the charge hopper. Useful when entering tight radii or if the concrete is dry out of the truck. (**Low-pressure water** required)



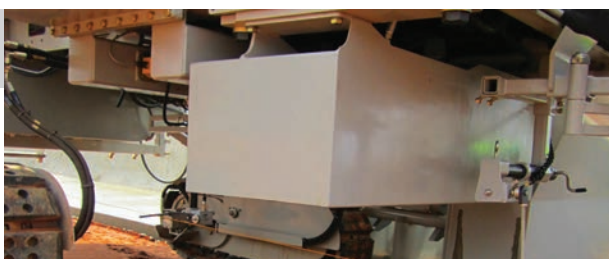
Mold Misting Kit

Creates a light spray of water that is directed immediately behind the mold and onto the fresh concrete, assisting in finishing and eliminating hand-splashing. (**Low-pressure water** required)



Auxiliary Water Tank

This 92-gallon (348 L) tank provides additional water for cleanup, concrete treatment, or jobsite utility. (Incompatible with **weight pod**)



Barrier/Parapet Options

Barrier Mold Lift Kit

Useful for lifting barrier molds off of steel cages. Provides an additional 24" (610mm) of lift beyond the 36" (914mm) in crawler post extension. (Requires **weight pod**)



Barrier/Parapet Mold Mounting Kit

This kit, designed for use with multiple barrier molds, includes offset mounting frame, barrier mold hopper, and vibrator mount extensions.



Parapet Sensor Mounting Kit

When pouring bridge parapet, the stringline normally has to be placed underneath the machine to give concrete trucks access. This kit allows the sensors to be mounted appropriately.



Belt Conveyor

Sometimes necessary for very tall barrier applications when standard auger does not provide enough rise to top of hopper.



Sidewalk/Ditch Options

Trimmer Extensions

Available in 6" (152mm), 12" (305mm), and 24" (610mm) widths. **Custom-application trimmers** are also available, call factory for details.



Sidewalk/Ditch Mold Mounting Kit

For sidewalk, ditch or monolithic curb and sidewalk, this kit includes bracing, and extensions to correctly locate sensors and vibrators. If stringline is over 6' (1.8m) from machine, an **extra-long sensor mount kit** may be necessary.



Other Application Options

Post-Hole Digger

This attachment allows you to quickly and accurately bore holes. Because of the automatic steering and leveling of the machine, the holes are more accurate than with traditional augers.



Center-Pour Paving Package

Using inserts, the right rear crawler post is moved to allow a paving mold to be installed for widths up to 14' (4m). It is necessary to remove the standard auger conveyor and trimmer.



C-MAX Package (May be Purchased Individually)

MAX Frame

Includes a secondary mounting position that brings the rear post forward. This redistributes the weight improving performance when using large molds.



MAX Crawlers

MAX crawlers are 1' (305mm) longer, heavier, and have an additional roller. This keeps the machine stable when using very large molds.



Nine Circuit Vibrator Manifold

In addition to the larger volume servo pump, the additional three vibrator connections offer expanded utility for larger applications.



Low Speed Crawler Torque Hubs

The low speed hubs produce smoother traveling at slow speeds, which is ideal for larger applications.



Accessories

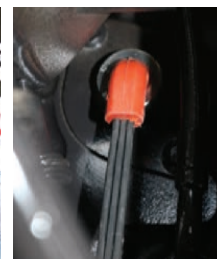
Sensor Skates

When pouring adjacent to existing pavement or curb, rather than using stringline, you can set up the sensors with skates. This allows you to set your grade from the paved surface.



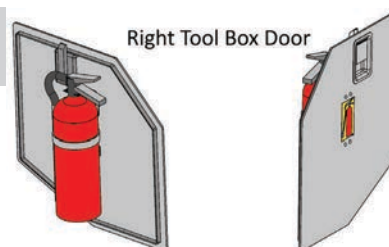
Engine Block Heater

Often necessary in colder climates, this simple device is plugged into the engine. It is electrically powered to warm the engine block to enable and reduce wear from cold starts.



Fire Extinguisher

Mounted just inside the toolbox, the 5 lb. (2.3kg) fire extinguisher can be a valuable addition.



Tool Kit

Crews operating in remote areas may benefit from having a well-equipped tool kit available. Contains 198 pcs including English and metric mechanics set, wrenches, pliers, and more.



Spare Parts Kit

Available in a number of levels for varying degrees of preparedness, having spare parts readily available can save your company from costly downtime.



Power & Power Curbers Pavers

Our Commitment Shows

727 Bendix Drive, Salisbury, NC USA 28146

P.O. Box 1639, Salisbury, NC USA 28145-1639

Tele: (704) 636-5871 Fax: (704) 633-8140

Email: info@powercurbers.com

www.powercurbers.com



BR - 57C OPTIONS R2 - 09/18